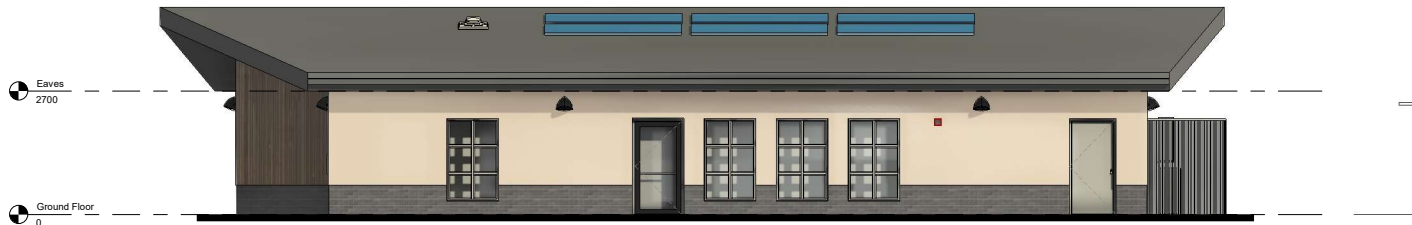


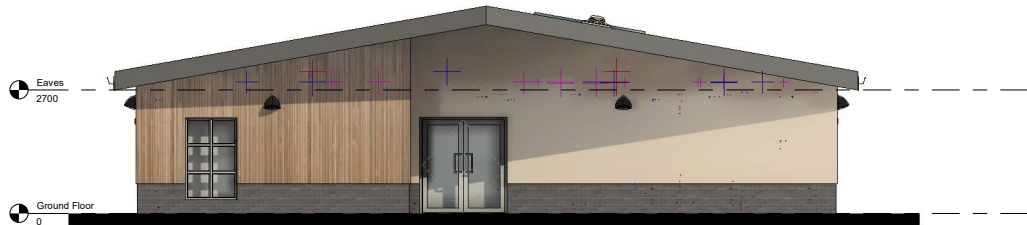
1 South East Elevation
1 : 50



2 North East Elevation
1 : 50



3 South West Elevation
1 : 50



4 North West Elevation
1 : 50

GENERAL NOTES:

PROPOSED EXTERNAL WALLS (to achieve min. u-value 0.23W/m²K)

EXTERNAL WALL TYPE 1:

Facing brickwork, type: Istock Staffordshire Slate Blue Smooth Facing Brick, up to 600mm above DPC, laid using Tarmac Tudor mortar colour: Black Grey Y14.
100mm 7N/mm blockwork above, with 125mm thick cavity.
uPVC weepholes (coloured to match brickwork) at 1000mm centres.
External blockwork to be clad, from 600mm above dpc, to eaves, using Norclad Timber Cladding system. Colour: Canadian Western Red Cedar. To be installed as per manufacturers details and specification.

EXTERNAL WALL TYPE 2:

Facing brickwork, type: Istock Staffordshire Slate Blue Smooth Facing Brick, up to 600mm above DPC, laid using Tarmac Tudor mortar colour: Black Grey Y14.
100mm 7N/mm blockwork above, with 125mm thick cavity.
uPVC weepholes (coloured to match brickwork) at 1000mm centres.
External blockwork to be clad, from 600mm above dpc, to eaves, using Pares Monotone through colour Render system. Colour - Smoke Grey (V420). To be installed as per manufacturers details and specification.

MASONRY BELOW DPC

Cavity wall to be continued down to foundation level, a minimum clear cavity to be maintained below DPC with a GEN1 concrete cavity fill below. Substrate blockwork to be min 7.3N/mm² compressive strength.

FOUNDATIONS:

Designed by structural engineers to suit existing ground conditions.

ROOF FINISH:

SkaShield® HB79 MG 4 mm capsheet laid over insulation and metal deck finished with Sama decor trim roof bars.

RAINWATER GOODS:

Aluminium deepflow roof gutters and 100mm square down pipes, Colour: Dark Grey.

WINDOWS AND DOORS:

Aluminium double glazed windows and doors powder coated Dark Grey. U Value: 1.6W/m².

PLANT ENCLOSURE:

2400mm High powder coated weld mesh type fence (Green) with single gate access for maintenance.

Manufacturer: Bredford Limited, Sheffield.

PANELS: NYLOR 20 SUPER, Nominal Height: 2400mm, Width panels: 2500mm.

- Mesh and wire. Welded mesh spacing 50mm vertical x 200mm horizontal x 6mm vertical and 8mm twin horizontal wires on the front and rear face of panel. Galvanised & polyester powder coated Green RAL6005.

POSTS: SENTINEL TWIFIX 0000 BHS - Galvanised rectangular hollow section 60 x 60 x 2.0mm, Post centres: 2525mm.

PHOTOVOLTAIC:

PV array roof mounted on south west facing roof elevation.

EXTERNAL LIGHTING:

LED wall mounted low voltage light fittings.

EXTERNAL WORKS:

(See external site layout drawing)

Tarmac: car park hardstanding and footpaths with level access to every doorway.

Community garden area for future use and development by users.

Wildflower planting to vacant areas around the proposed new building.

REV	DATE	DESCRIPTION
PROJECT		Nunthorpe Community Building
DRAWING TITLE		Proposed Elevations - Planning
SCALE (S1)	1 : 50	DRAWN BY N.R.
FILE REF	953 / 2401	DWG NO A004
		DATE 27/02/25
Design Services		Middlesbrough
Regeneration Middlesbrough Council		moving forward
Founders Court, 115 Grange Road, Middlesbrough TS1 2DT		
©COPYRIGHT: All rights reserved. This drawing must not be reproduced without permission. Do not scale. Contractor is responsible for checking dimensions, which are in millimetres, unless otherwise stated.		